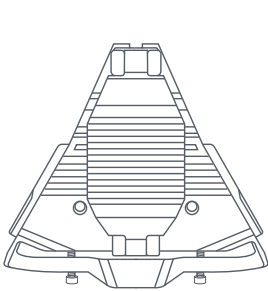


What's in the Box



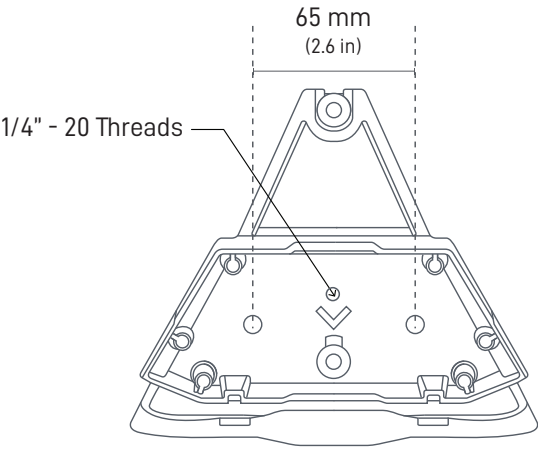
Roof Rack and Rail Mount



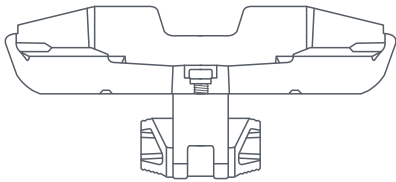
Screw Driver



Hex Key



163.3 mm
(6.4 in)

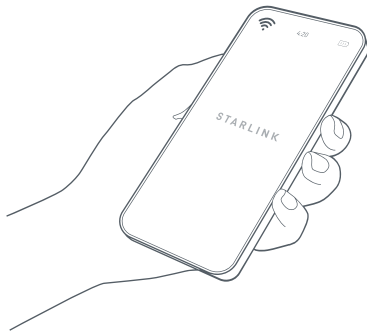


163.2 mm
(6.4 in)

SCREW INSTALLATION

1 | Download the Starlink App

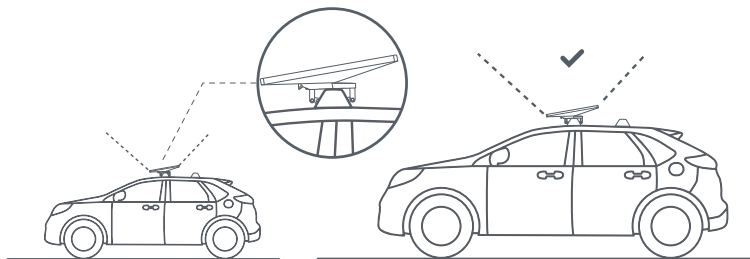
Scan the QR code to download the Starlink App.



2 | Find Mounting Location

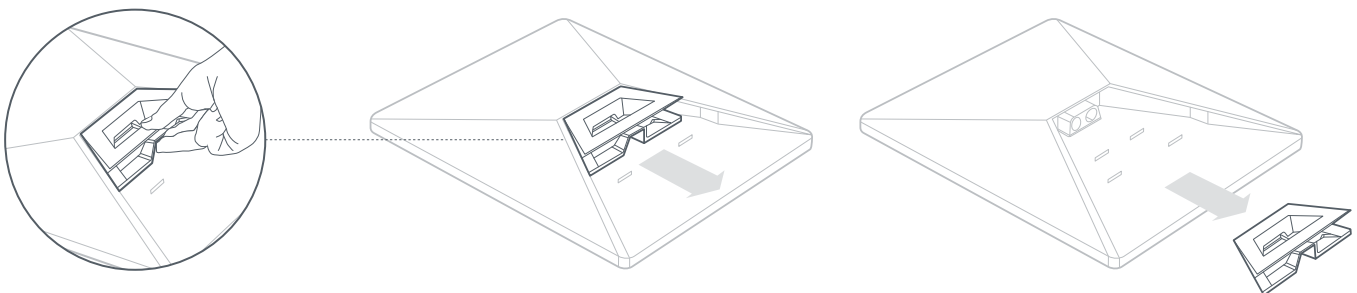
Your Starlink needs a clear view of the sky so it can stay connected with satellites as they move overhead. Objects that obstruct the connection between your Starlink and the satellite will cause service interruptions. Use the obstructions tool in your App to ensure you have selected a suitable mounting location.

You will also want to ensure your Starlink is mounted in the correct orientation relative to your vehicle as shown below.



3 | Remove Kickstand

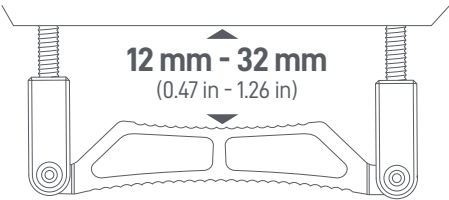
Squeeze the release tab and pull it away from its fixed location.



4 | **Determine Correct Grip Pad Orientation**

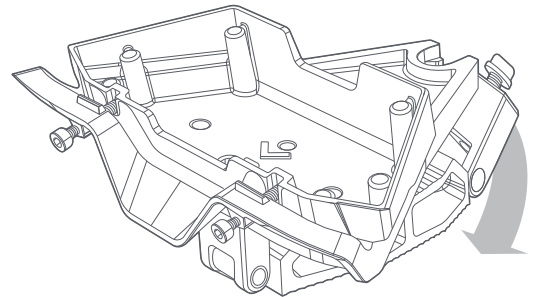
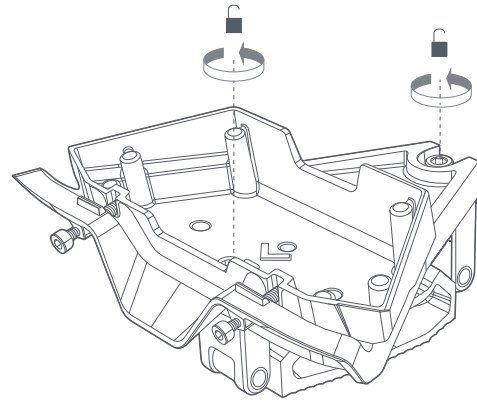
Determine the correct grip pad orientation based on the thickness of the roof rack bar or rail.

The Mini Roof Rack and Rail Mount can accommodate bars or rails up to 88 mm (3.5 in) wide. The short side should be used with bars or rails 12 mm (0.47 in) to 32 mm (1.26 in) thick. The long side should be used for all other bars or rails up to 48 mm (1.89 in) thick.



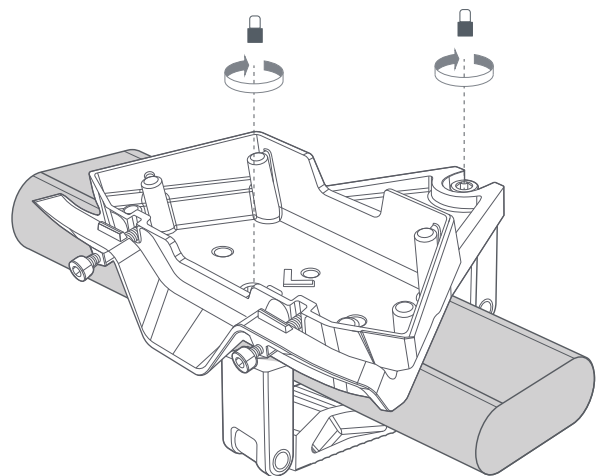
12 mm (0.47) - 32 mm (1.26 in) Thick Roof Racks or Rails**5a | Prepare Mount**

Loosen the 2 socket screws until mount is wide enough to wrap around your roof rack or rail. Flip down mount arm and place onto roof rack or rail.

**6a | Install Mount**

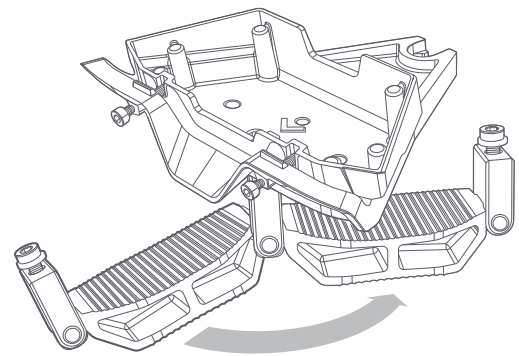
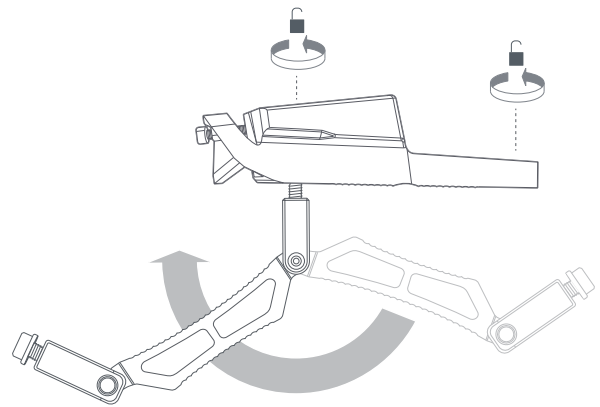
Place mount onto roof rack or rail with the grip pad contacting and equally centered on the bar. Ensure the proper installation orientation of the mount on your vehicle. The arrow indicated on the mount points towards the front of the vehicle.

Flip mount arm into latched position and hand tighten the two socket screws until the mount is firmly and securely attached onto roof rack or rail.



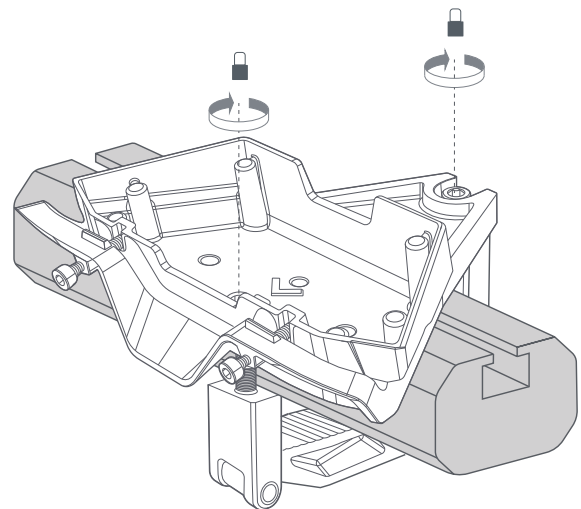
28 mm (1.1 in) - 48 mm (1.89 in) Thick Roof Racks or Rails**5b | Prepare Mount**

Loosen the 2 socket screws, flip down mount arm, and rotate to the thicker side of the grip pad. Continue to loosen socket screws until mount is wide enough to wrap around your roof rack or rail then place onto roof rack or rail.

**6b | Install Mount onto Roof Rack**

Place mount onto cross bar with the grip pad contacting the roof rack and equally centered on the bar. Ensure the proper installation orientation of the mount on your vehicle. The arrow indicated on the mount points towards the front of the vehicle.

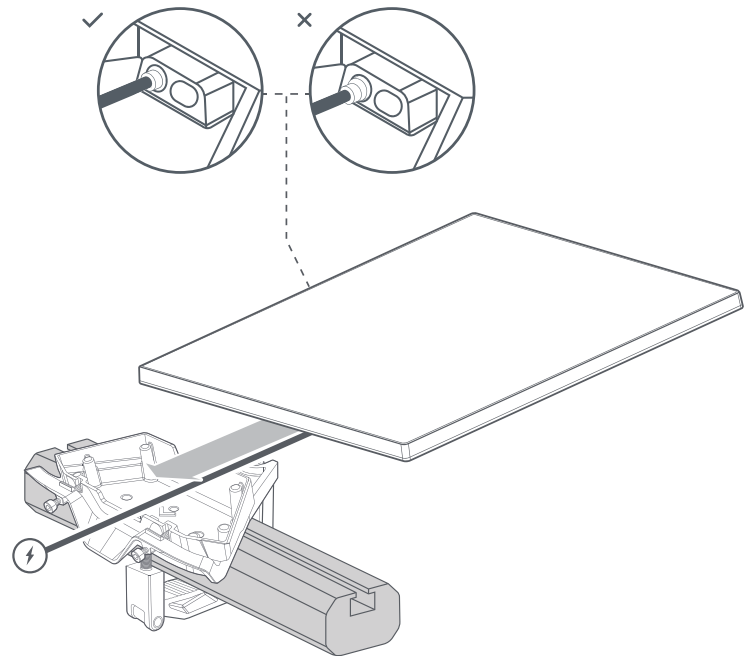
Flip mount arm into latched position and hand tighten the two hand screws until the mount is firmly and securely attached onto roof rack or rail.



7 | Plug in Cable and Install Starlink

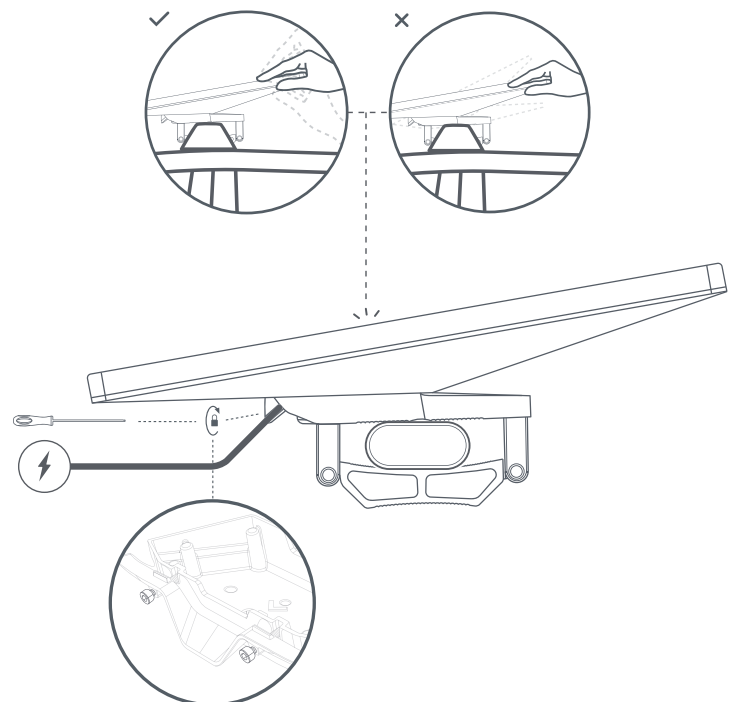
Plug the power cable into your Starlink and ensure the power cable is fully inserted.

Slide your Starlink into the mount until it clicks into place and ensure your Starlink is firmly attached.



8 | Secure Mount

Using the screwdriver, drive in the two locking screws until hand tight. Do not over-tighten.



INSTALLATION CONDITIONS

⚠**CAUTION!** If you are uncomfortable with any part of the installation process, do not attempt - contact a professional to install your Starlink. Starlink is not responsible for injury or damage to property caused by the installation process.

Kit Installation for Use on Moving Vehicles.

⚠**CAUTION!** Take extra care if installing a Starlink for being used on a moving vehicle or vessel. Ensure that the mount is installed firmly on a structurally sound, horizontal surface away from other equipment to give your Starlink a clear view of the sky. Equipment falling off the vehicle due to poor installation practices can cause serious accidents resulting in bodily injury, do not mount the Starlink on any vehicle or vessel if the mount structure is not stable, or if it cannot be properly secured as described in this guide. Ensure the installation on vehicle or vessel is compliant with local Department of Transportation or maritime regulations.

⚠**WARNING!** Mounts are not designed for high winds, hurricane or tornado wind loads. Tethering should be used in all cases to prevent failure in an unexpected wind event. See installation instructions before connecting this equipment to the input supply.

⚠**WARNING!** To avoid personal injury and/or damage to the property when drilling, take caution and follow basic safety procedures, including:

- Wear appropriate eye, hand, and face protection.
- Avoid studs, electrical wiring, and water lines when drilling. Drilling into any of these can lead to fire, shock, injury, or death.
- Drill at a slight downward angle from the home interior to the home exterior and thoroughly apply sealant. Improper drilling and sealing may lead to water and/or bug intrusion and/or damage.